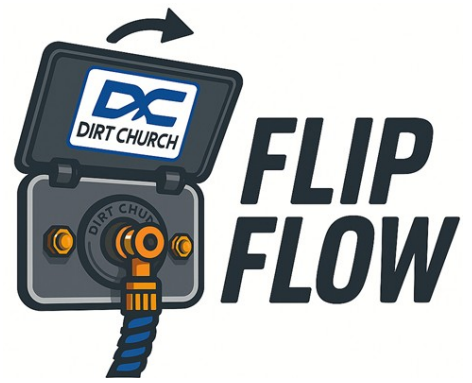


# Flip Flow, Installation Instructions



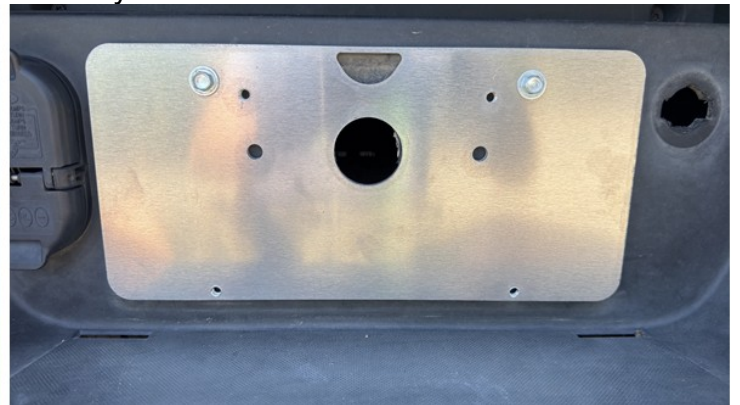
## 1) Drop Spare Tire.

Remove the plastic cover near the license plate and use your ignition key to remove the theft deterrent plug. Assemble the provided extension bars which can be found under the rear seat and insert them into the access point, then use the lug wrench to turn it counterclockwise to lower the tire.



## 2) Install Aluminum Plate & Drill 1.5" Dia Hole:

Remove the rear license plate and install the aluminum plate as shown below, using the screws that came inside the license plate mount. Using the aluminum plate as a guide, drill a 1.5" dia hole with the provided hole saw. **NOTE:** You will need to remove the drill bit that is installed in the hole saw, and make sure the hole you are going to drill is clear of any obstructions.



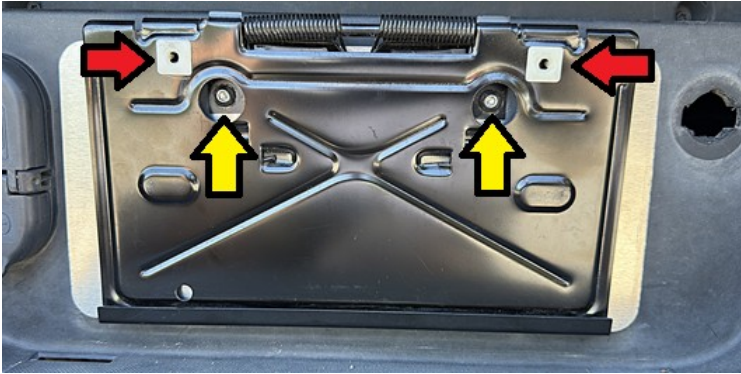
## 3) Install Air Coupler:

Insert the air coupler through the aluminum plate as shown below, then from the back side, hand tighten the provide nut.



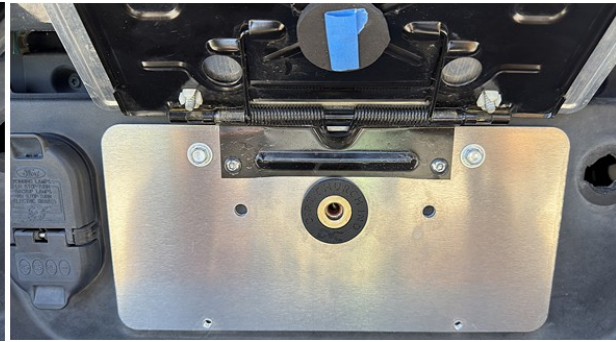
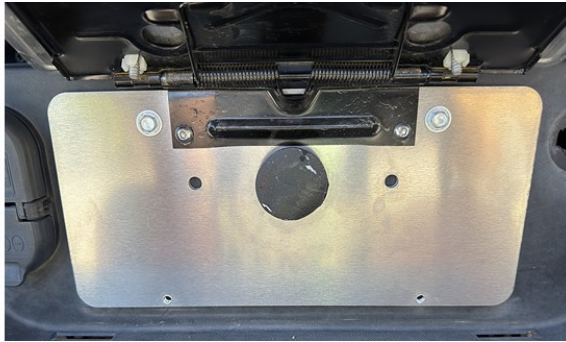
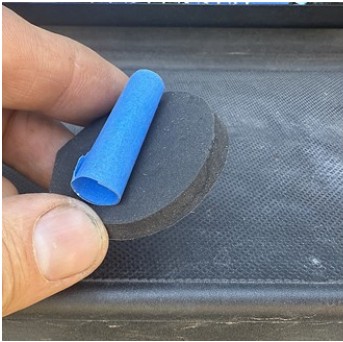
#### 4) Attach license plate bracket:

Install the license plate bracket using the provided  $\frac{1}{4}$ "x 20 button head bolts. Push in the white plastic clips as shown below next to the red arrows, then using the bolts removed in step 2 re-attach the license plate.



#### 5) Install Rubber Pads:

The rubber pads will prevent dirt and debris from getting inside the air coupler. Use a piece of tape to temporarily hold the pad against the air coupler, with the white adhesive tape removed close the lid of the license plate frame, the neoprene pad will stick the steel frame in the proper location. You will be able to see an indentation after a few seconds, if the location is off center readjust as necessary.



#### 6) Optional Air Chuck Installation, For Air Bags.

The aluminum plate has 2 pre-cut holes that can be used for installing air bag Schrader valves. If desired use the plate as a guide and drill two  $\frac{5}{16}$ " dia holes. Once completed, install the (2) smaller rubber pads to cover up the Schrader valves using the same procedure you used in step #5. Due to the limited clearance threaded on plastic caps will not fit properly. **NOTE:** Some air chucks will not work with the low-profile Schrader valves. We have found the following air chuck on Amazon to be a great fit.





## EPAuto 2 Pack Open Flow Straight Lock-On Air Chuck with Clip for Tire Inflator

Visit the EPAuto Store

4.4 ★★★★★ (2,037) | Search this page

Amazon's Choice

\$8<sup>97</sup>

ASIN # B017S44ARO

UPC # 690443852290

### 7) Connecting Air Lines:

Included with this kit is 15 feet of 1/4" airline as well as a push to connect "T" fitting. Using the supplied "T" fitting to splice into your existing airline where it will be easiest to route the new airline to the flip up license plate mount. Use the supplied zip ties to route the 1/4" line so it is clear of sharp edges, suspension components as well as the vehicle exhaust.

Test for air leaks then reinstall the spare tire and theft deterrent plug.



Dirt Church Industries appreciates your order!

Questions during the assembly of this kit or, have design feedback please reach out to us at [sales@dirtchurchindustries.com](mailto:sales@dirtchurchindustries.com)

