

Stacktech Folding Table Installation Instructions

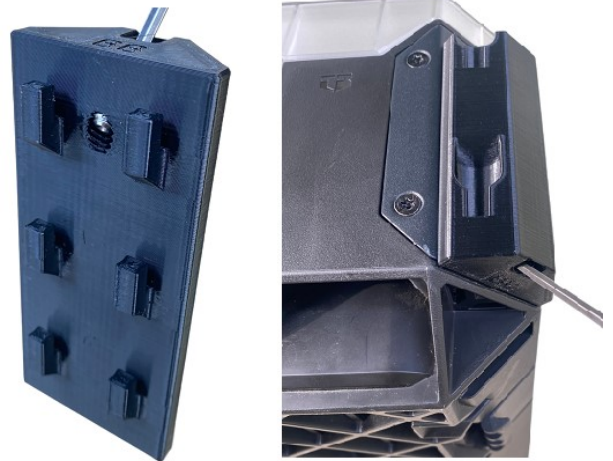


For Steel Table Only, If you did not purchase the steel table from us during your initial order, you will need to purchase this table from Harbor Freight PN 63470.

1) Install Set Screws:

Install the provided $\frac{1}{4}$ " set screws into the bottom of the 3D printed brackets as shown below, don't let them protrude through the back of the bracket. Once you have selected your desired location, installed on your box and lightly tighten the set screw. Repeat this step for both brackets.

NOTE: You are threading into plastic so don't over tighten the fastener, lightly snug is plenty strong.



2) For Bamboo Table Only, Assemble Carriage Bolts & Mount Bamboo Table:

Using the provided $\frac{1}{4}$ " carriage bolts and serrated nuts, finger tighten and install as shown, using a $\frac{7}{16}$ " socket.

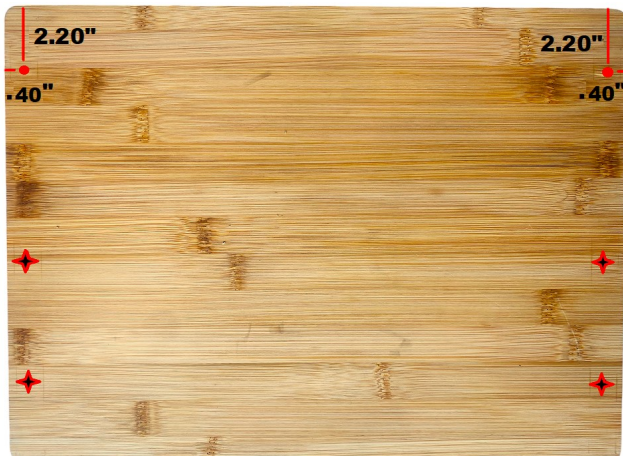
NOTE: Do not use any of the fasteners that come with the folding shelf brackets.



DO NOT USE THE FASTENERS THAT COME WITH THE FOLDING SHELF BRACKETS

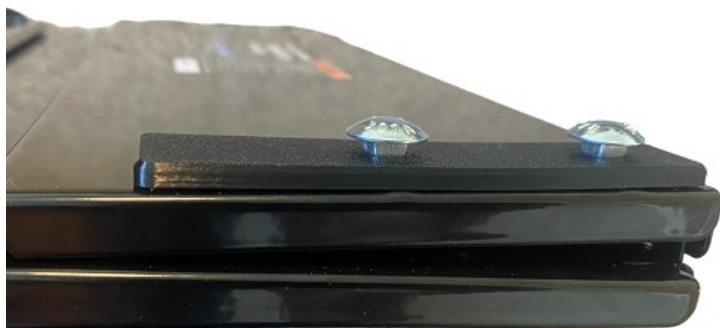


Mark the 1st hole location 2.20" down from the top and .40" over from the sides. Using the folding shelf bracket as a template, mark the other 4 hole locations to be drilled. Use a $\frac{3}{32}$ " bit to drill a hole .25" deep. Then install the folding shelf brackets using the provided (6) Phillips screws.



3) For Steel Table Only, Install Folding Table Carriage Bolt Brackets:

Snap in the provided brackets as shown below, then push in the 1/4" carriage bolts, they will align with features built into the brackets. Finger tighten the serrated nuts, then install on your StackTech box.



4) Final Assembly / Weight Capacity:

Install the completed assembly, you can continue to tighten the 1/4" nuts to increase the amount of pressure it takes to remove the table from the 3D printed mounts, tighten as necessary to the desired tension.

We rate this table to safely hold 80lbs static loading when evenly distributed. At a certain point your box will tip over, or parts will break if improperly loaded, so please use caution



Dirt Church Industries appreciates your order.

Please take the time to leave us a review.

Questions during the assembly of this kit, we can be reached at sales@dirtchurchindustries.com.

